

# OLYMPIA



The Pinnacle of Distinction

OLYMPIA is an exclusive residential project that fuses the dynamism of modern life with contemporary luxury, located in a central area in transformation with easy access to all services.

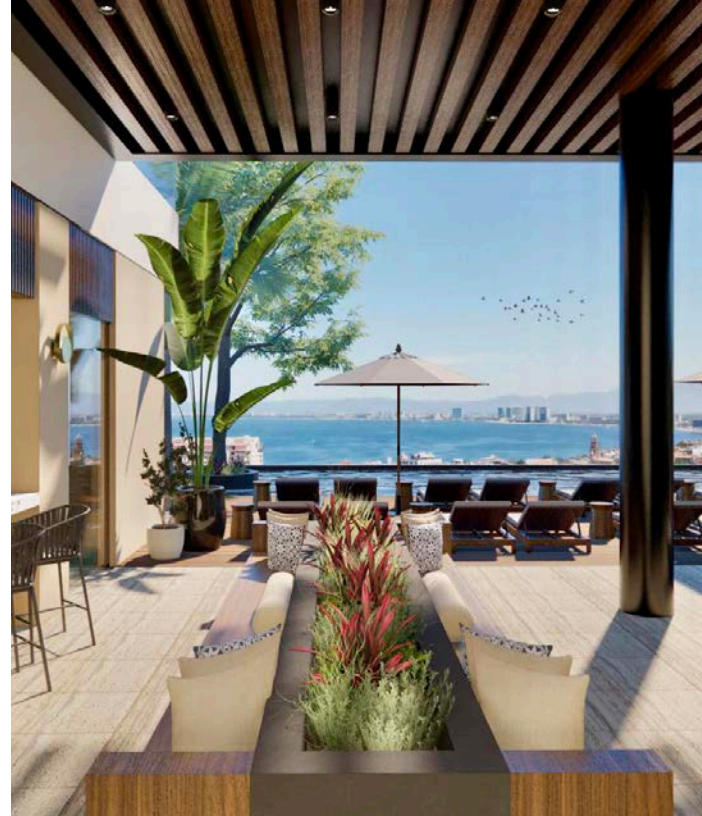


*The developer reserves the right to modify colors, materials, services, plans, prices and terms at any time without prior notice.*

# Exclusivity, Dynamism and Contemporary Luxury



*The developer reserves the right to modify colors, materials, services, plans, prices and terms at any time without prior notice.*



IC\_ESTUDIO

## IC Estudio

IC Estudio, responsible for the architectural design of OLYMPIA, is led by its founder, architect Ignacio Gómez, a native of Puerto Vallarta and graduate of the Tecnológico de Monterrey. His approach is distinguished by combining innovative functionality with an aesthetic that harmoniously adapts to the environment, maximizing the efficiency of each space.



## DECO Designers

In 2009, Cheko Pérez and Marce Gallo founded DECO Designers with the vision of creating functional and timeless spaces, adapted to a variety of styles. Their residential design unites function and style, integrating space, aesthetics, and technology in collaboration with the owners.

# LOCATION

⚽ 300 meters - Agustín Flores Contreras Municipal Stadium

☂ 800 meters - Soriana Híper

🏖 900 meters - Beach Access

🍴 1.1 km - El Barracuda Restaurant

🚶 1.6 km - Boardwalk

📍 3.2 km - Romantic Zone



OLYMPIA

# Key Points



Located in the Lázaro Cárdenas neighborhood, minutes from the best of Vallarta: Zona Romántica, beaches, recreational centers and steps from the Municipal Stadium.



Enjoy the pool, gym, sauna and more amenities for your well-being in exclusive areas where luxury and comfort create a unique experience.



The contemporary design of the units provides a feeling of simplicity and elegance, while their large windows allow natural light to flow freely.

# INVESTMENT

OLYMPIA offers certainty and security to investors, backed by the solid alliance between ELEMENT DESARROLLOS CREATIVOS and GOVA, guaranteeing high added value with innovation and quality that ensures sustained growth in investment.

**ELEMENT**  
Desarrollos Creativos

**GOVA**

*The developer reserves the right to modify colors, materials, services, plans, prices and terms at any time without prior notice.*



# General Information

- ✓ 36 UNITS
- ✓ 17 PARKING SPACES
- ✓ 20 STORAGE ROOMS
- ✓ COMMERCIAL AREA
- ✓ 24/7 SECURITY SYSTEM
- ✓ CONCIERGE



*The developer reserves the right to modify colors, materials, services, plans, prices and terms at any time without prior notice.*

AMENITIES

- 1

BBQ Area
- 2

Sport Bar
- 3

Fire Pit
- 4

Lobby
- 5

Tanning Area
- 6

Commercial Area
- 7

Infinity Pool
- 8

Pool Lounge Chairs
- 9

Central Garden
- 10

Coworking
- 11

Pet Washing
- 12

Elevators
- 13

Ice Bath
- 14

Infrared Sauna
- 15

Restrooms
- 16

Daybeds
- 17

Jacuzzi
- 18

Parking
- 19

Gym



The developer reserves the right to modify colors, materials, services, plans, prices and terms at any time without prior notice.

Lobby



*The developer reserves the right to modify colors, materials, services, plans, prices and terms at any time without prior notice.*



Coworking

# Central Garden

*The developer reserves the right to modify colors, materials, services, plans, prices and terms at any time without prior notice.*

Art and style in every photograph



Central Garden

*The developer reserves the right to modify colors, materials, services, plans, prices and terms at any time without prior notice.*



Pet Washing



Share and enjoy your (own) way

Sport Bar

*The developer reserves the right to modify colors, materials, services, plans, prices and terms at any time without prior notice.*

Fire pit



*The developer reserves the right to modify colors, materials, services, plans, prices and terms at any time without prior notice.*

Sauna and Ice Bath



# Infinity Pool



Endless views, unparalleled moments

The developer reserves the right to modify colors, materials, services, plans, prices and terms at any time without prior notice.

# Jacuzzi - Daybeds



Relax in a space designed for you

*The developer reserves the right to modify colors, materials, services, plans, prices and terms at any time without prior notice.*

YOUR ONLY LIMIT IS YOU

Create your best version in every session

Air Conditioning Gym

*The developer reserves the right to modify colors, materials, services, plans, prices and terms at any time without prior notice.*



## Interiors

*The developer reserves the right to modify colors, materials, services, plans, prices and terms at any time without prior notice.*





*The developer reserves the right to modify colors, materials, services, plans, prices and terms at any time without prior notice.*



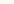
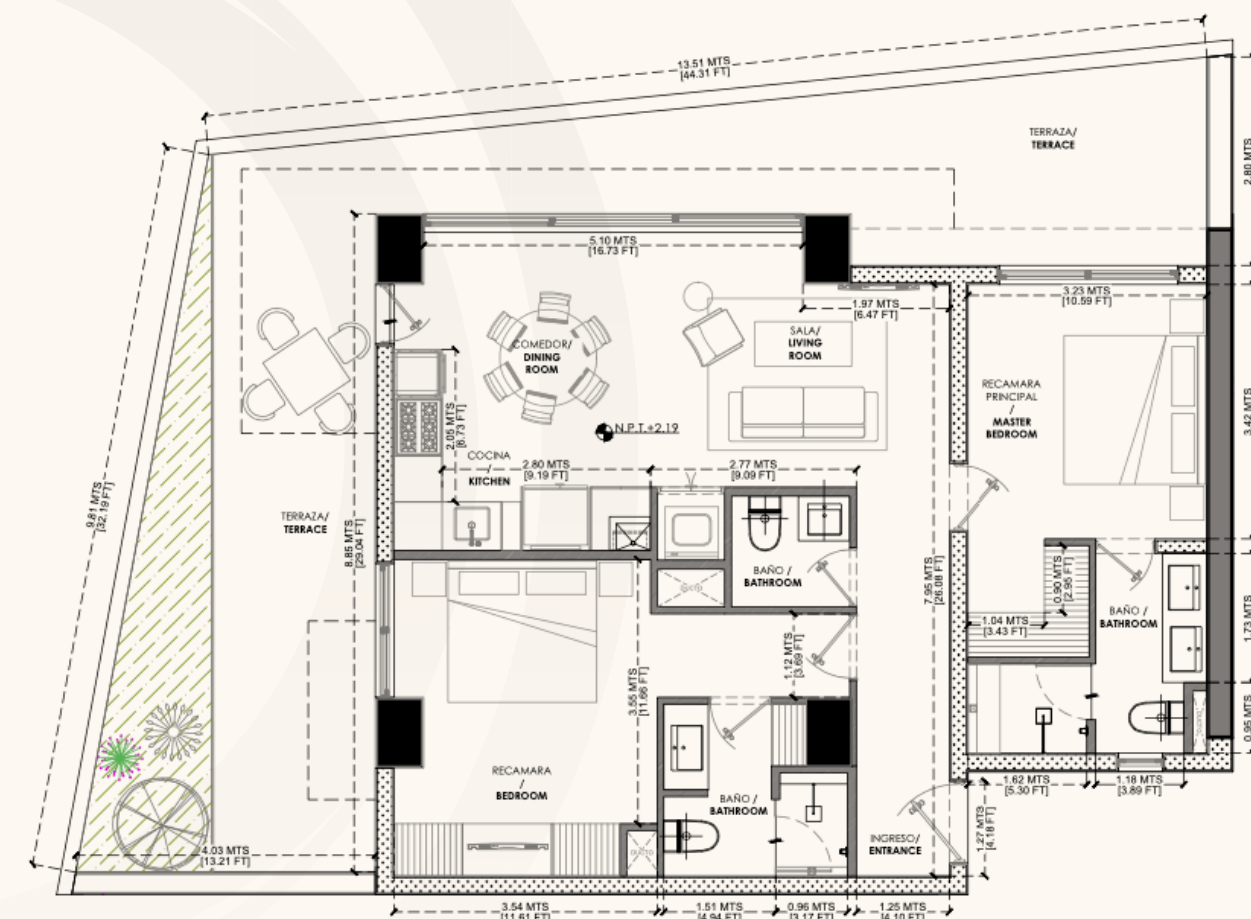
Interiors



Details that make a difference

*The developer reserves the right to modify colors, materials, services, plans, prices and terms at any time without prior notice.*

2 BEDROOMS | 2.5 BATHROOMS

 Kitchen Terrace

INTERIOR:  
96,18 M<sup>2</sup> / 1,034.43 FT<sup>2</sup>

TERRACE:  
57,14 M<sup>2</sup> / 613.63 FT<sup>2</sup>

TOTAL:  
153,32 M<sup>2</sup> / 1.587,35 FT<sup>2</sup>




# TYPE B

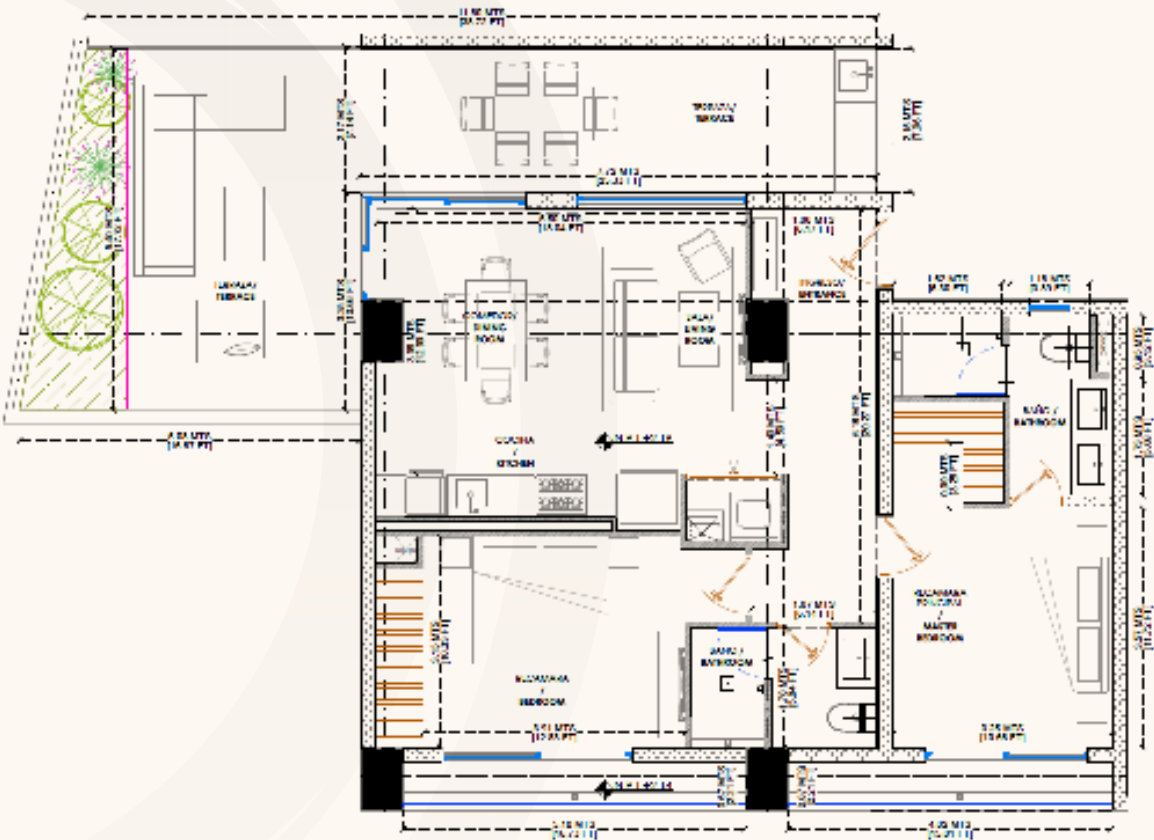
UNIT 102

2 BEDROOMS | 2 BATHROOMS



-  2 Bedrooms
-  2 Bathrooms
-  Kitchen

-  Living room
-  Laundry Room
-  Terrace

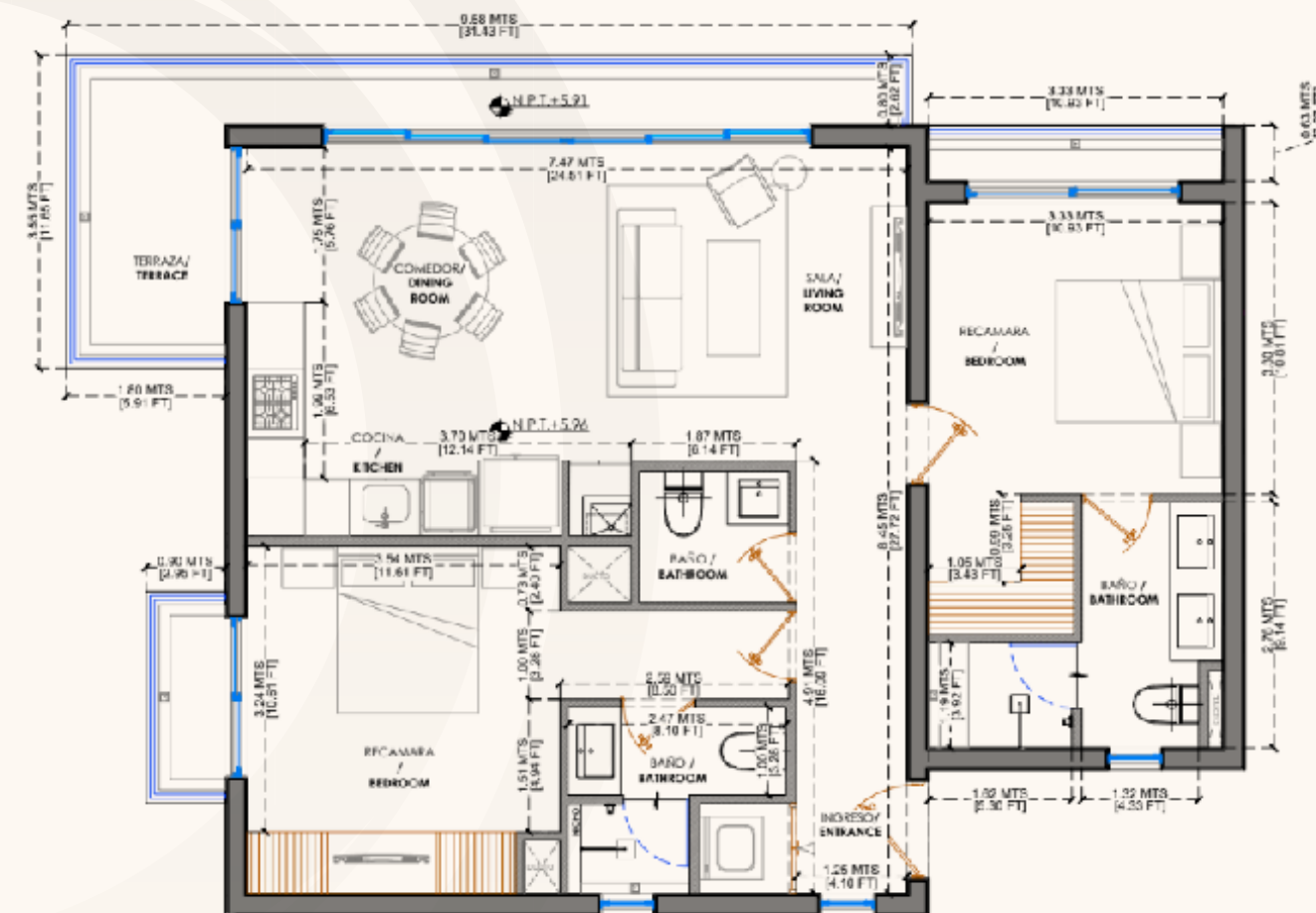


INTERIOR:  
92.5 M<sup>2</sup> / 995.66 FT<sup>2</sup>

TERRACE:  
51.76 M<sup>2</sup> / 557.14 FT<sup>2</sup>

TOTAL:  
144.26 M<sup>2</sup> / 1,552.80 FT<sup>2</sup>

2 BEDROOMS | 2.5 BATHROOMS

 Kitchen Terrace

TOTAL:  
112,22 M<sup>2</sup> / 1.207,92 Ft<sup>2</sup>

TYPE D

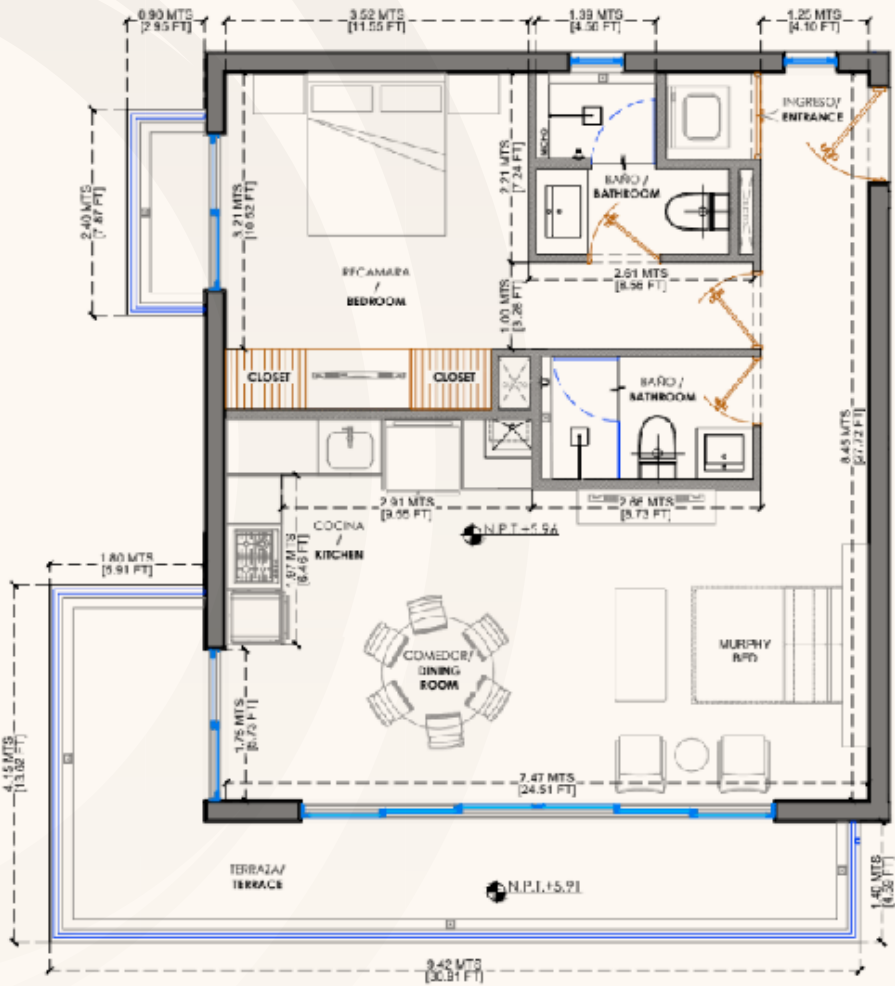
UNITS 202, 302, 402, 502

1 BEDROOM | 2 BATHROOMS



- 1 Bedroom + Murphy bed
- 2 Bathrooms
- Kitchen

- Living room
- Laundry Room
- Terrace



INTERIOR:  
70.41 M<sup>2</sup> / 757.88 Ft<sup>2</sup>

TERRACE:  
20.29 M<sup>2</sup> / 218.39 Ft<sup>2</sup>

TOTAL:  
90.70 M<sup>2</sup> / 976.28 Ft<sup>2</sup>

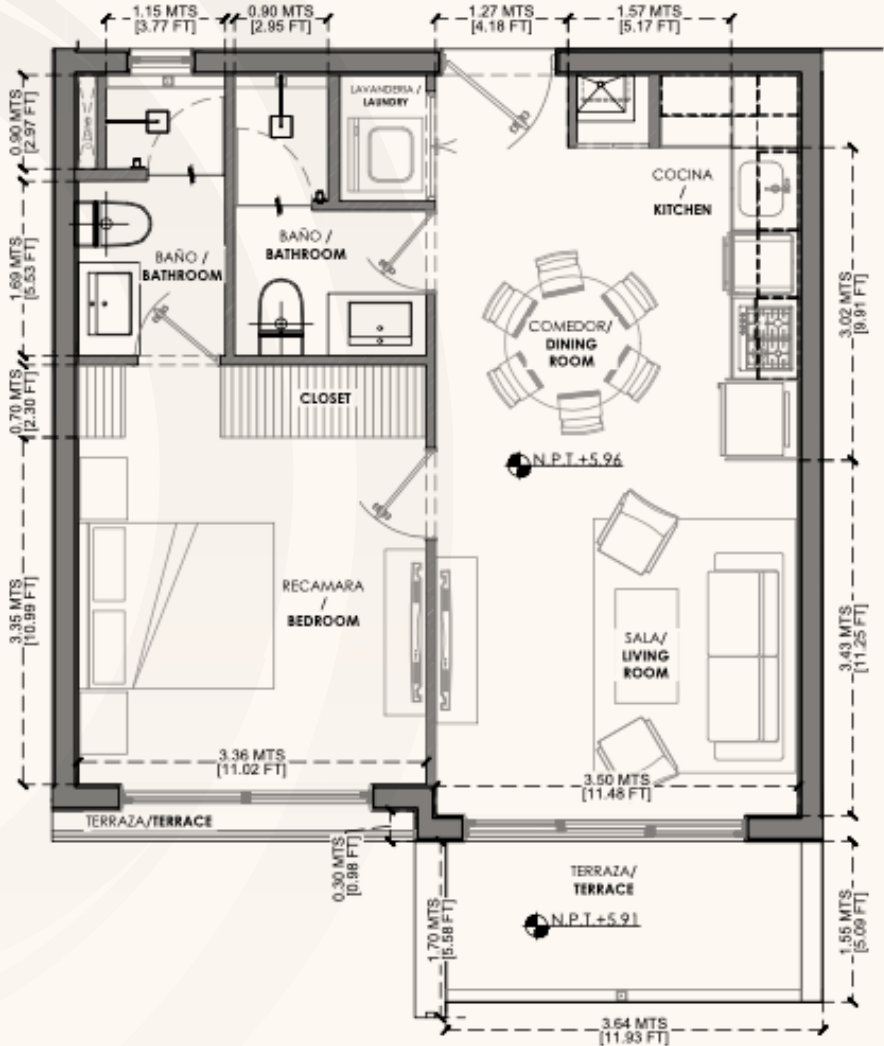
# TYPE E

UNITS 203, 303, 403, 503

1 BEDROOM | 2 BATHROOMS



- 1 Bedroom
- 2 Bathrooms
- Kitchen
- Living room
- Laundry Room
- Terrace



INTERIOR:  
54.06 M<sup>2</sup> / 581.89 Ft<sup>2</sup>

TERRACE:  
7.55 M<sup>2</sup> / 81.26 Ft<sup>2</sup>

TOTAL:  
61.61 M<sup>2</sup> / 663.15 Ft<sup>2</sup>

The developer reserves the right to modify colors, materials, services, plans, prices and terms at any time without prior notice.

# TYPE F

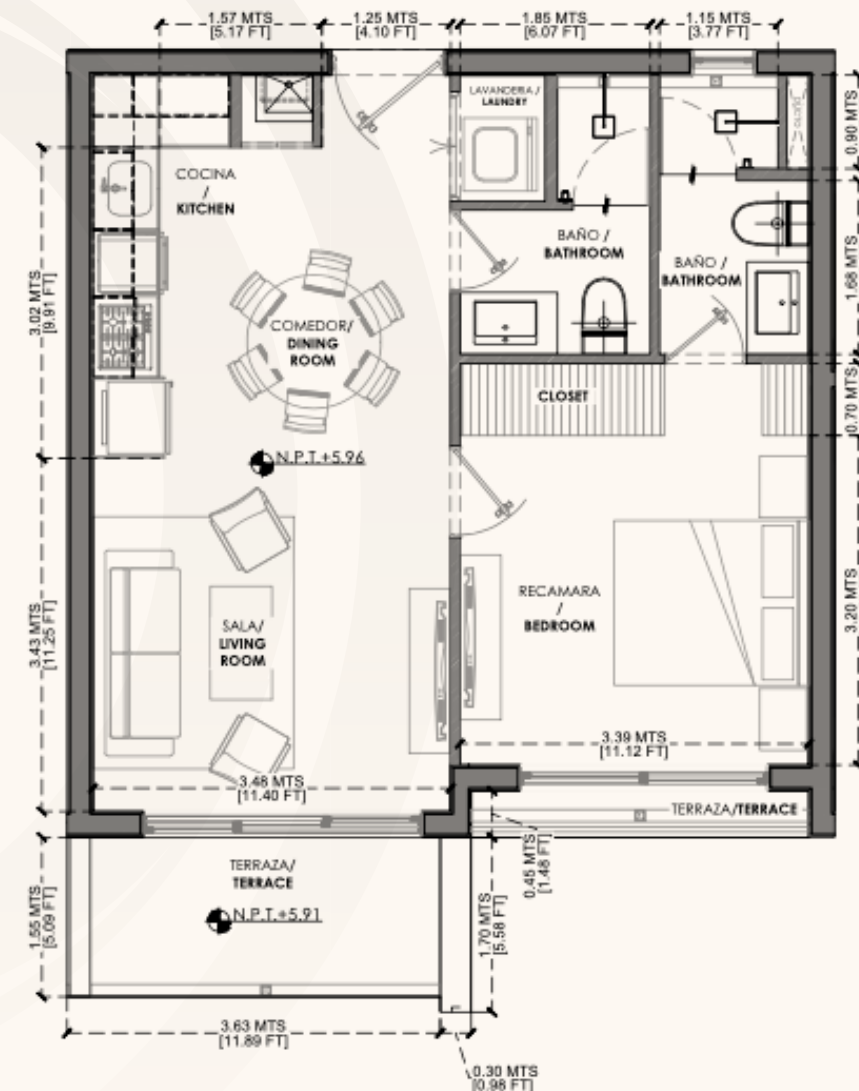
UNITS 204, 304, 404, 504

1 BEDROOM | 2 BATHROOMS



- 1 Bedroom
- 2 Bathrooms
- Kitchen

- Living room
- Laundry Room
- Terrace



INTERIOR:  
53.61 M² / 577.05 Ft²

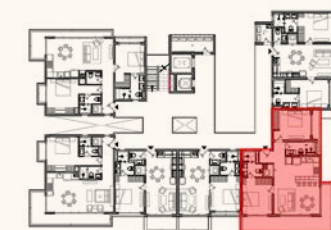

TERRACE:  
7.95 M² / 85.57 Ft²

TOTAL:  
61.56 M² / 662.62 Ft²


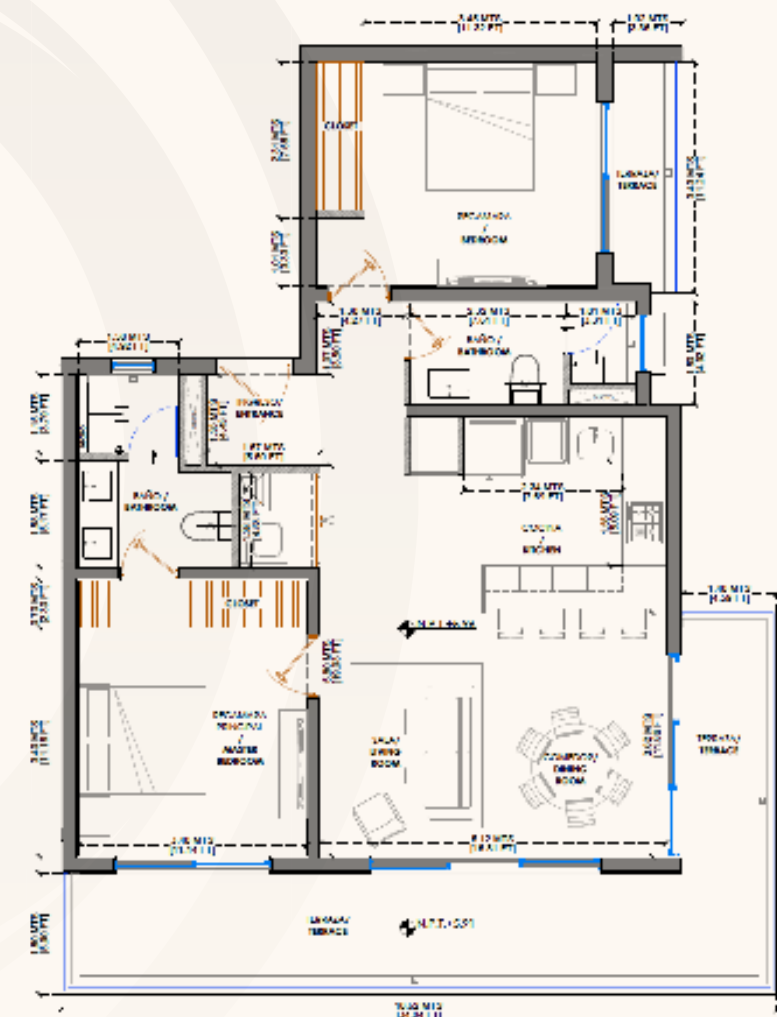
# TYPE G

UNITS 205, 305, 405, 505, 605, 705

2 BEDROOMS | 2 BATHROOMS

 2 Bedrooms 2 Bathrooms Kitchen

## Living room

 Laundry Room Terrace

INTERIOR:  
90.90 M<sup>2</sup> / 978.43 Ft<sup>2</sup>




TERRACE:  
28.75 M<sup>2</sup> / 309.46 Ft<sup>2</sup>

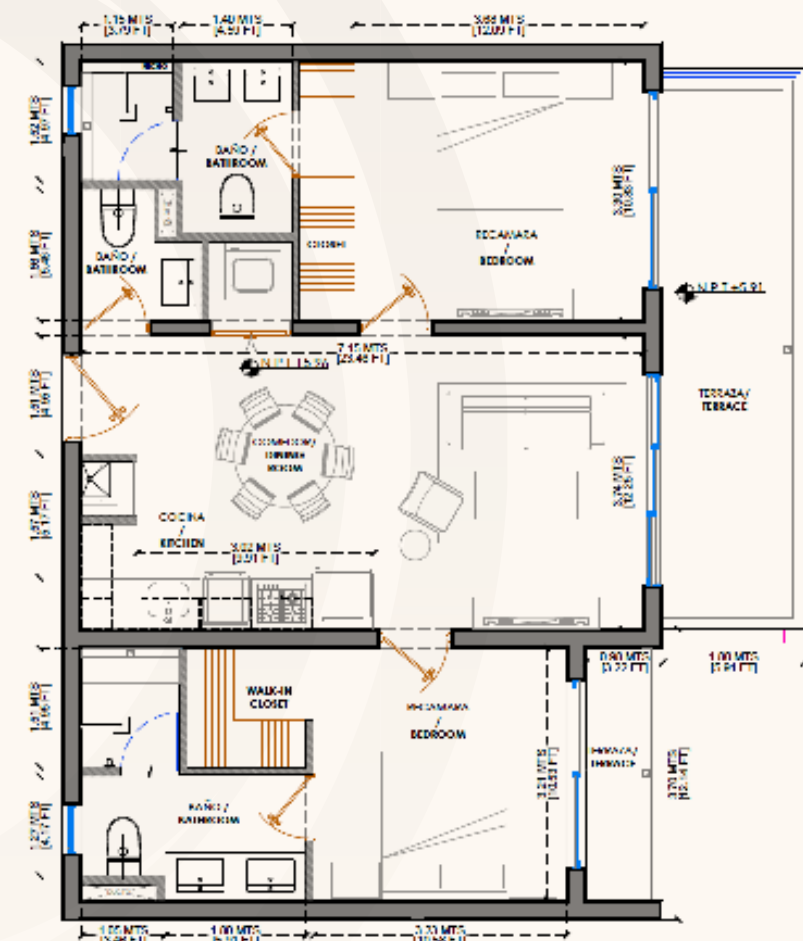
TOTAL:  
119.65 M<sup>2</sup> / 1287.90 Ft<sup>2</sup>

2 BEDROOMS | 2.5 BATHROOMS



- 2 Bedrooms
- 2.5 Bathrooms
- Kitchen

-  Living room
-  Laundry Room
-  Terrace



INTERIOR:  
81.66 M<sup>2</sup> / 878.98 Ft<sup>2</sup>


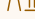

TERRACE:  
16.26 M<sup>2</sup> / 175.02 Ft<sup>2</sup>

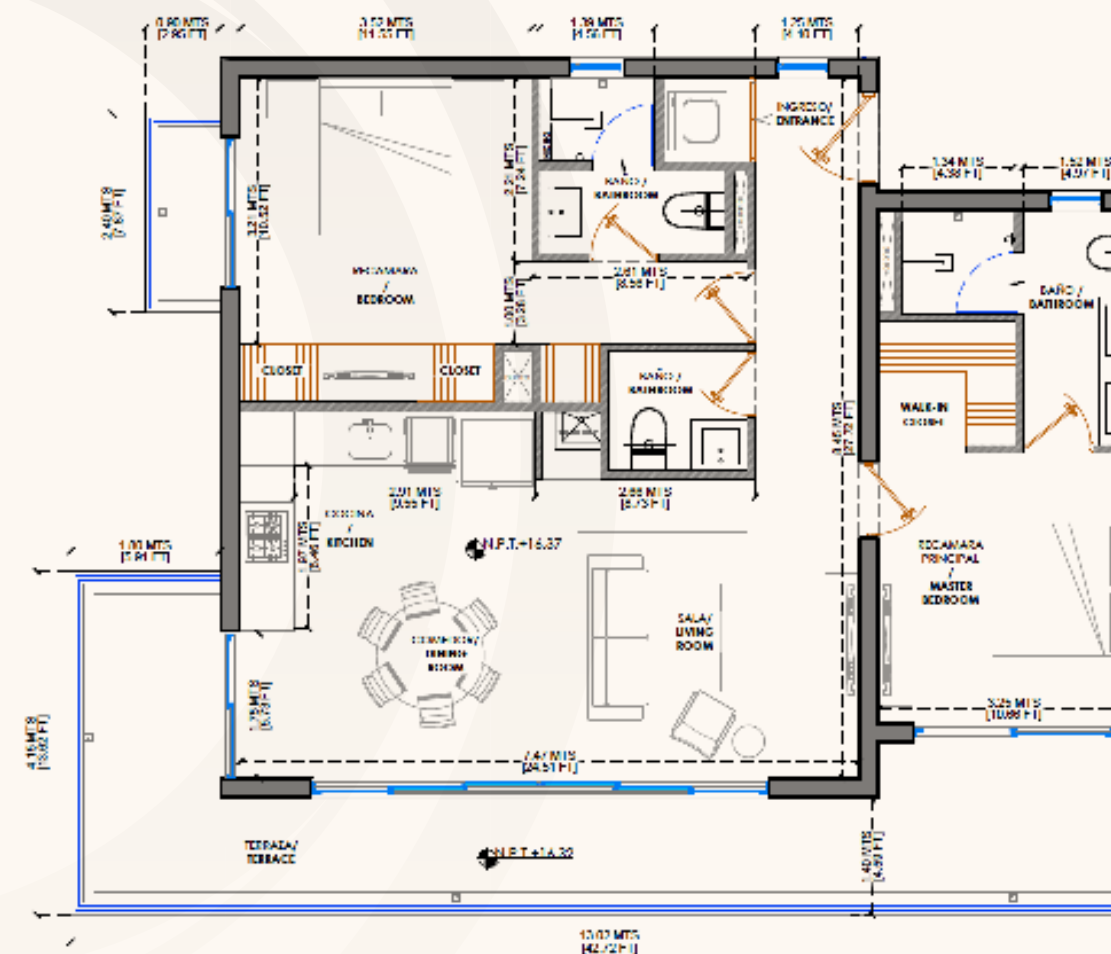
TOTAL:  
97.92 M<sup>2</sup> / 1054.02 Ft<sup>2</sup>

2 BEDROOMS | 2.5 BATHROOMS



- 2 Bedrooms
- 2.5 Bathrooms
- Kitchen

-  Living room
-  Laundry Room
-  Terrace



INTERIOR:  
92.83 M<sup>2</sup>/ 999.21 Ft<sup>2</sup>

TERRACE:  
27.53 M<sup>2</sup>/ 296.33 Ft<sup>2</sup>

TOTAL:  
120.36 M<sup>2</sup>/ 1295.54 Ft<sup>2</sup>

# TYPE J

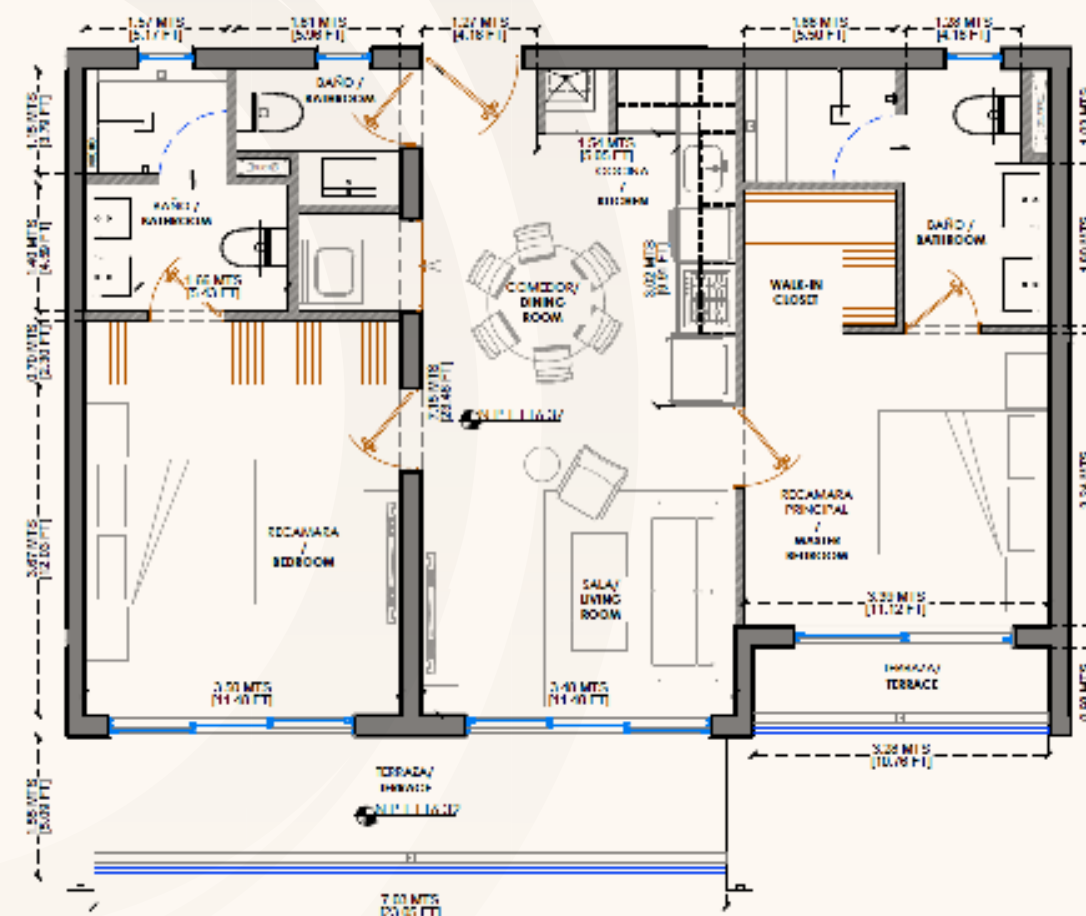
UNITS 604, 704

2 BEDROOMS | 2.5 BATHROOMS



- 2 Bedrooms
- 2.5 Bathrooms
- Kitchen

- Living room
- Laundry Room
- Terrace



INTERIOR:  
80.49 M<sup>2</sup> / 866.38 Ft<sup>2</sup>


TERRACE:  
15.11 M<sup>2</sup> / 162.64 Ft<sup>2</sup>

TOTAL:  
95.60 M<sup>2</sup> / 1,029.03 Ft<sup>2</sup>


# Finishes

## Kitchens


Upper and lower cabinets in american oak wood tone or similar.




White Quartz countertop or similar.




Stainless steel and/or similar gas grill.




Stainless steel and/or similar hood.



Built-in gas oven and/or similar.



Undermount sink made of stainless steel or similar.



## Bathrooms

Kiel Sand 120 x 60 cm porcelain cement and/or similar.



White Quartz or similar countertops.



Gun metal color accessories.



Shower wall and floor: Milena rectified ceramic marble 30 x 60 cm or similar



Mirrors in bathrooms included.



## Air Conditioning

The living room and bedrooms have inverter-type air conditioning and ceiling fans for added comfort.

## Carpentry

Bathroom furniture, closets and doors with veneer in american oak wood tone or similar.



## Windows

Ceylon PVC windows in all units.

## Finishes

Kiel Sand floor 60 x 120 cm or similar for units, the entire open area of the rooftop



## Gym Area

Oak imitation wood floor or similar



## Terrace of the Units

Calajan porcelain wood floor .20 x 1.20m or similar

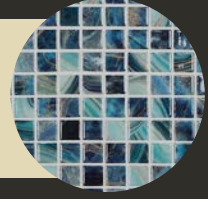


## Pool

Pool deck and/or similar.



Nature Royal pool Venetian.

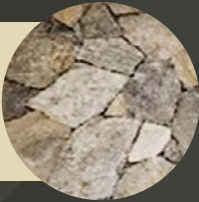


Sport Bar

Calajan wood porcelain floor, rectified porcelain 20 x 120 cm and/or similar.



Flagstone or similar.



Central Garden

Stamped cement floor.



Travertine marble stone on the facade.



Lobby

Kiel Sand floor 60 x 120 cm or similar in the lobby area.



Exotic stone on the lobby wall.



Smart Home

ECHO SHOW 8

Smart display with Alexa.  
  
8” touch screen. Allows you to make video calls and view the camera.  
  
Allows you to create scenes and automate turning lights on and off.



Lighting. .

Smart lighting switch. Allows you to control the lighting by voice or from an application. Allows you to create scenes and automate the turning on and off of the lights.



Security cameras

HD 1080p, waterproof, night vision, compatible with Alexa, two-way audio. Rechargeable battery with 3 months of life.



Smart lock.

5 opening methods. Fingerprint, password, physical key, proximity card and from the app remotely.



# OLYMPIA

A project by:

---

**ELEMENT**  
Desarrollos Creativos

 **GOVA**

